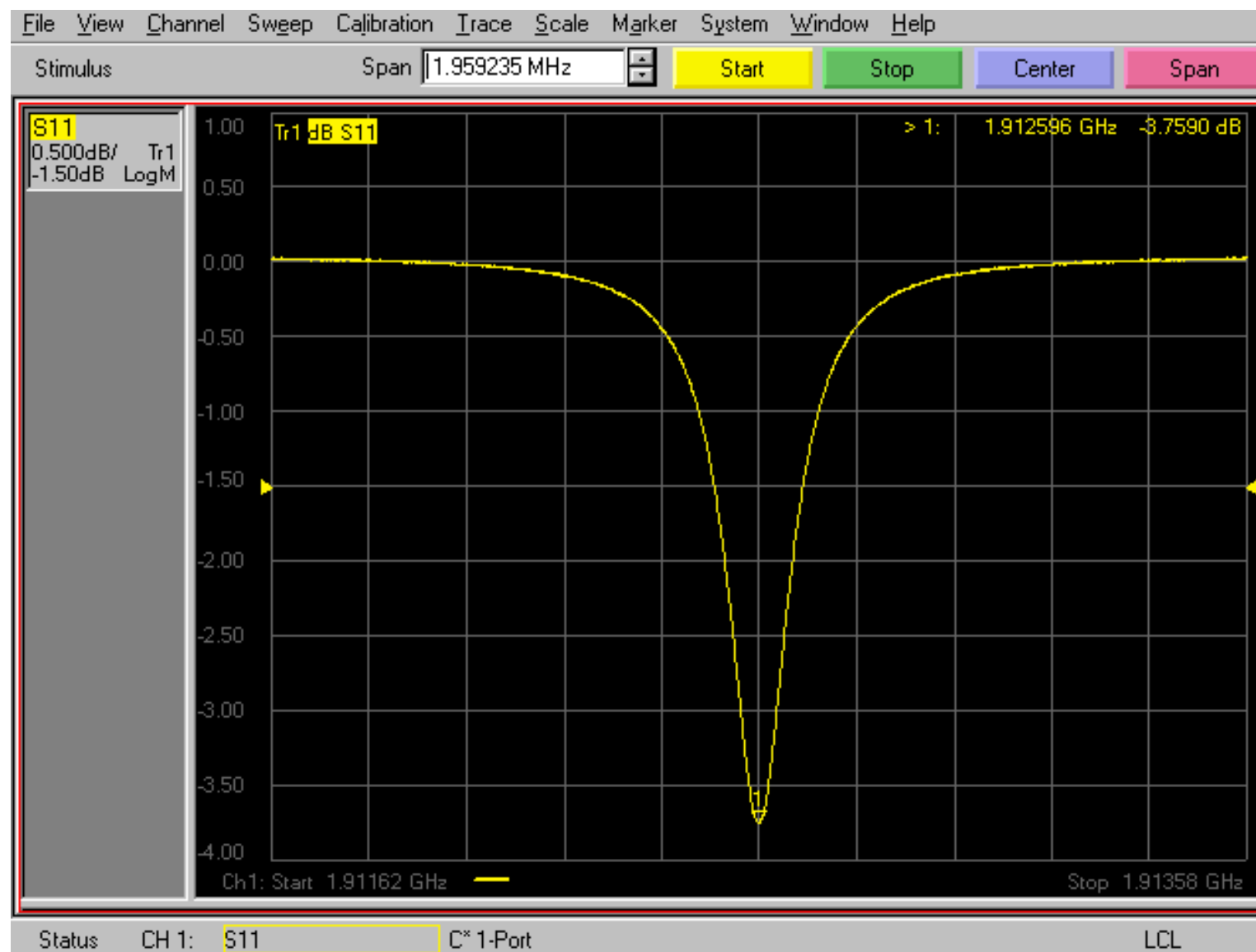
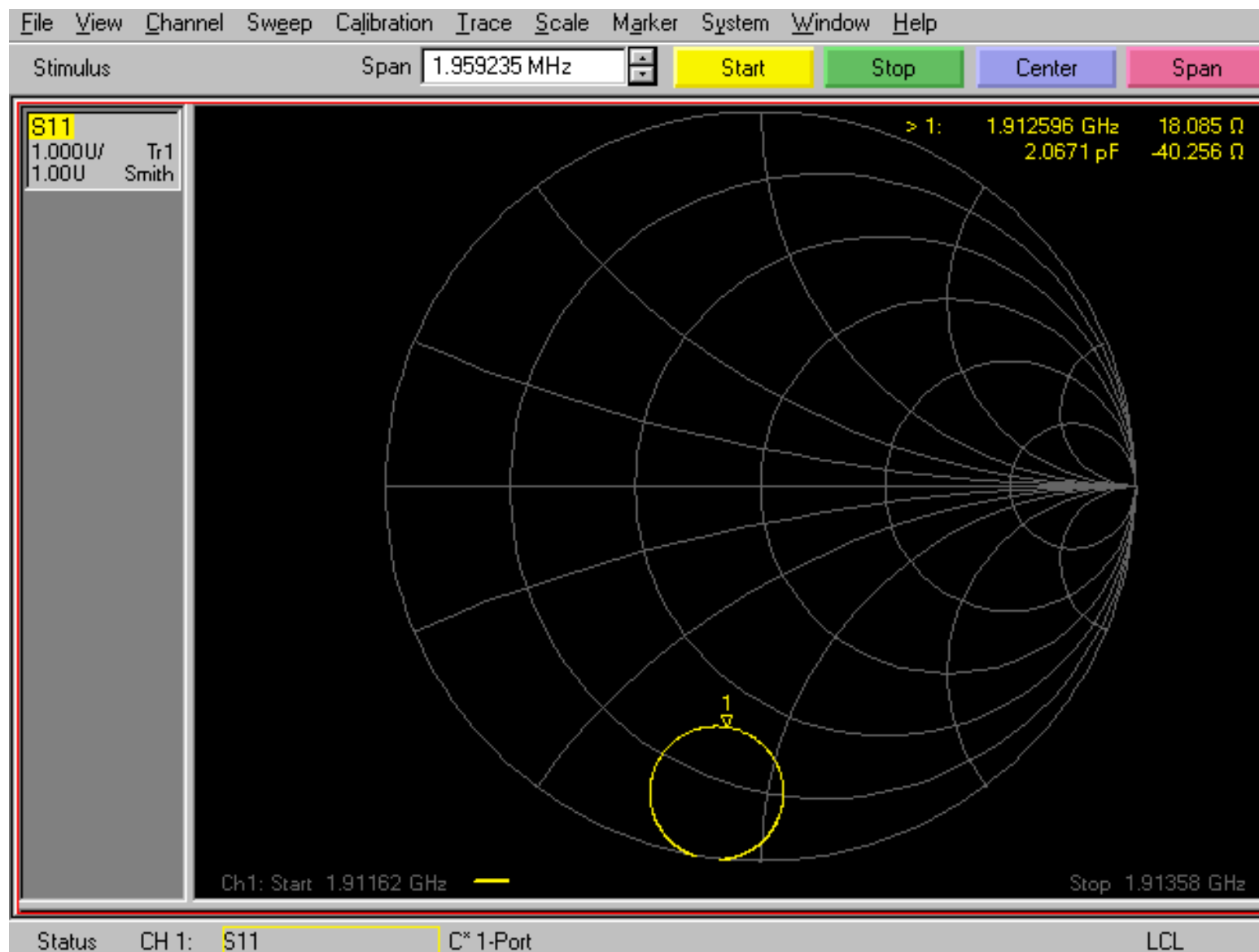


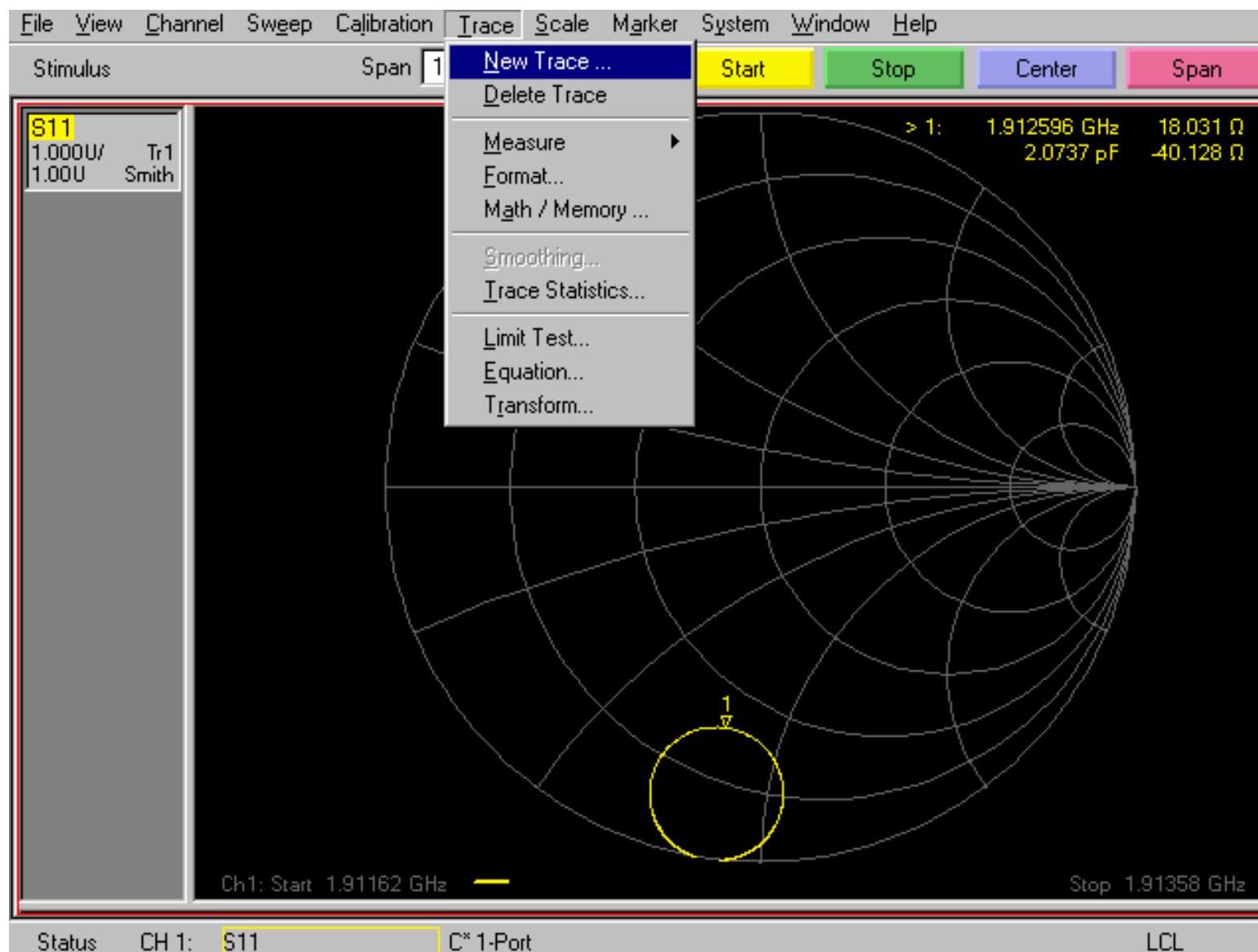
## Cavity impedance measurement with PNA



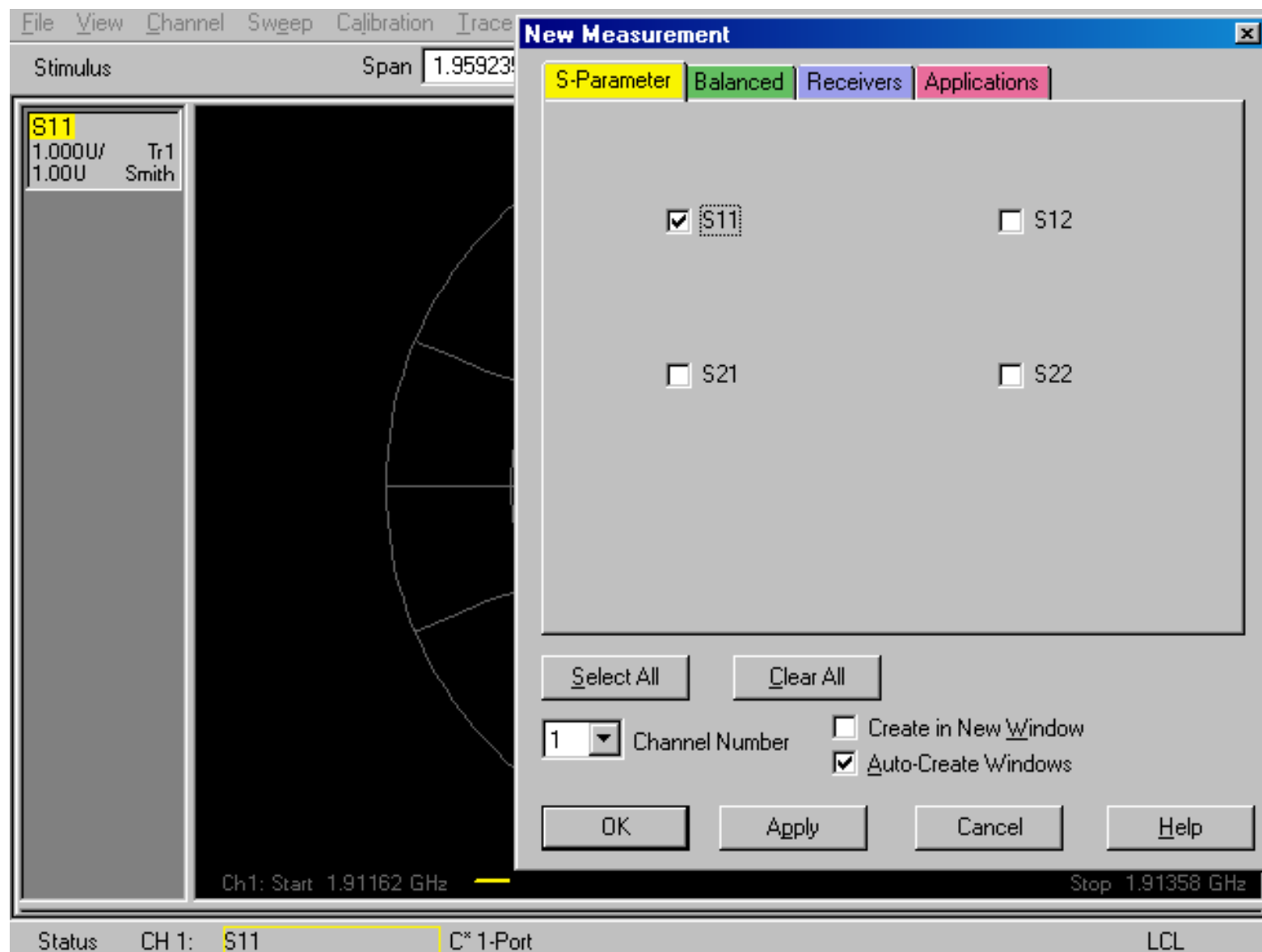
## Cavity impedance measurement with PNA



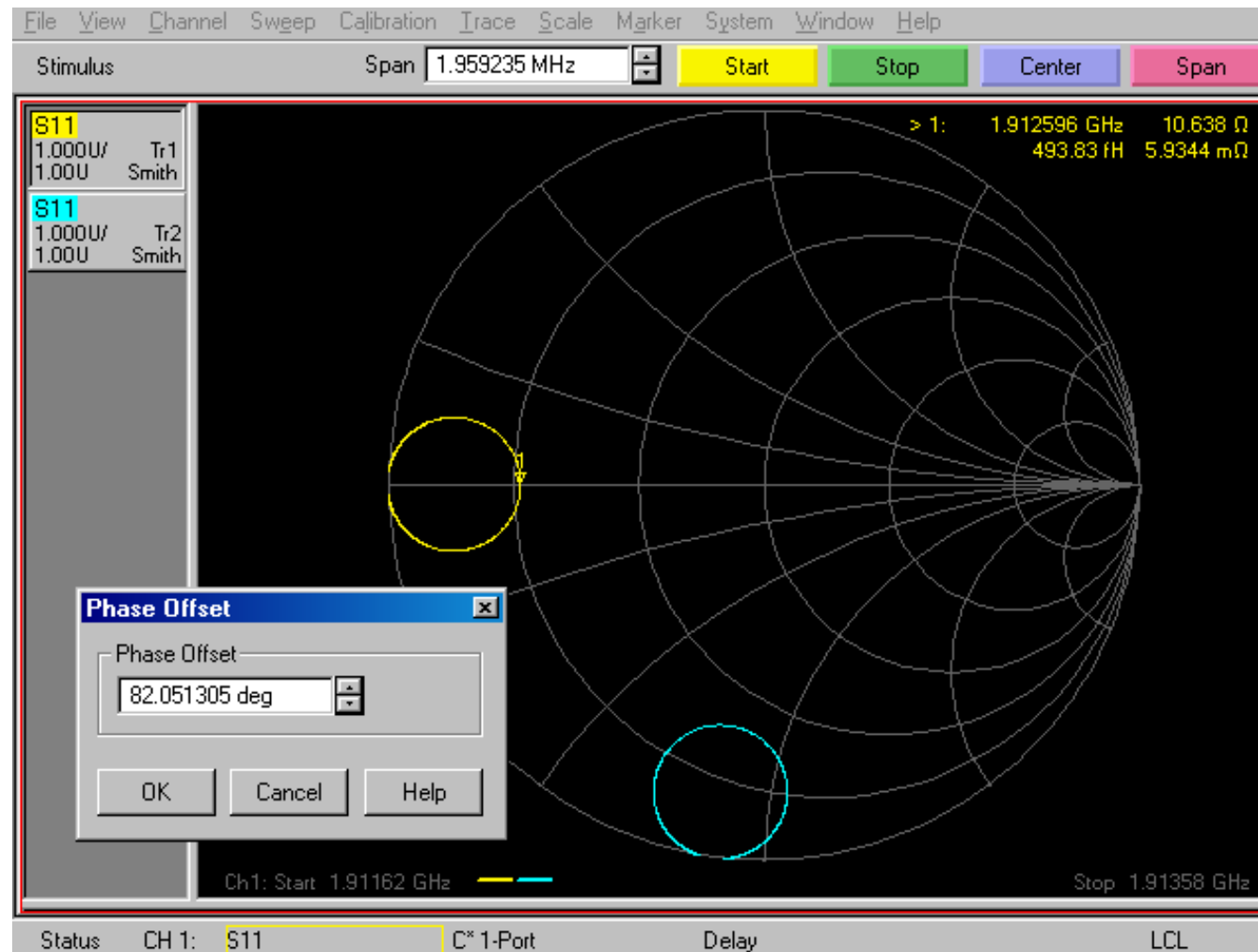
## Cavity impedance measurement with PNA



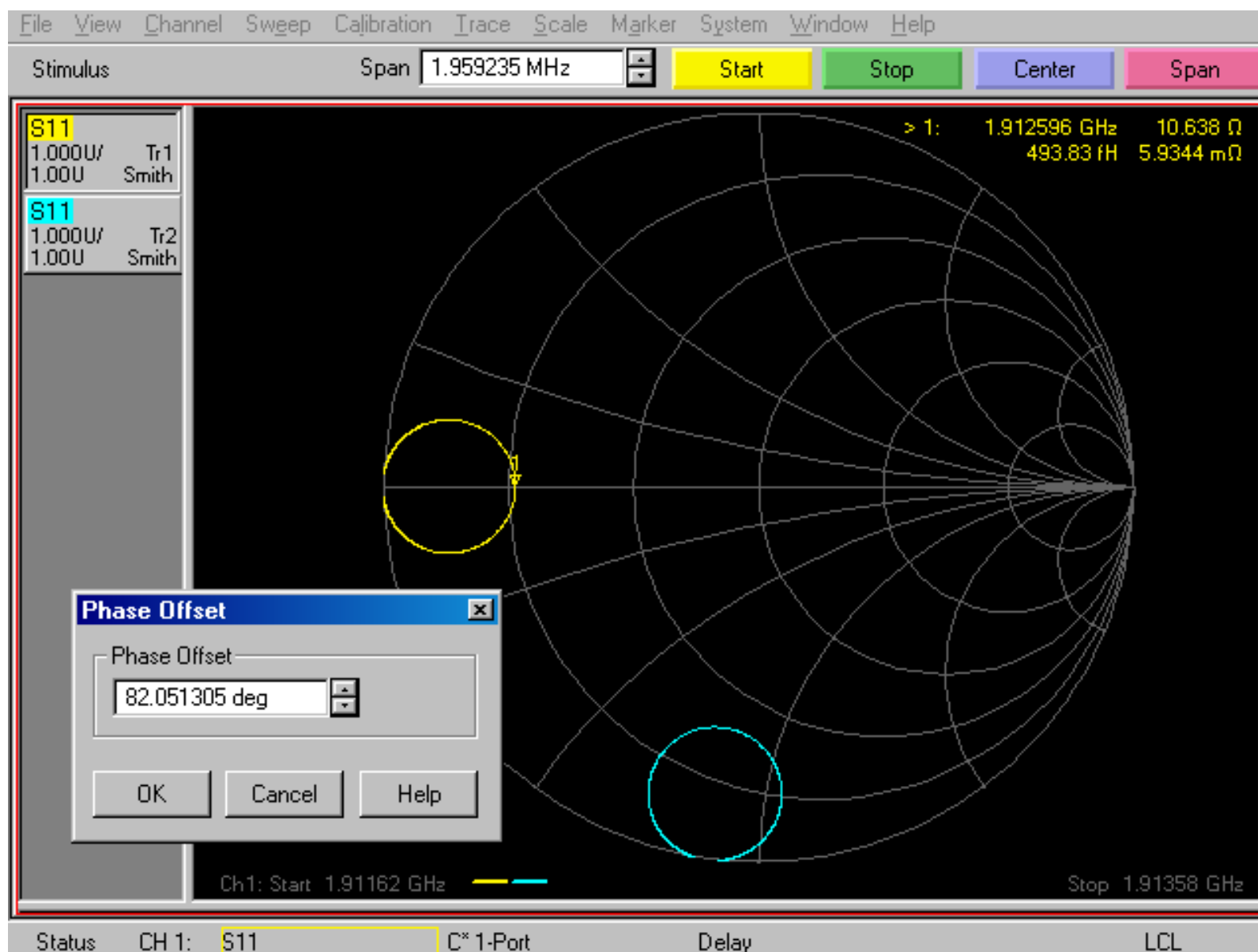
## Cavity impedance measurement with PNA



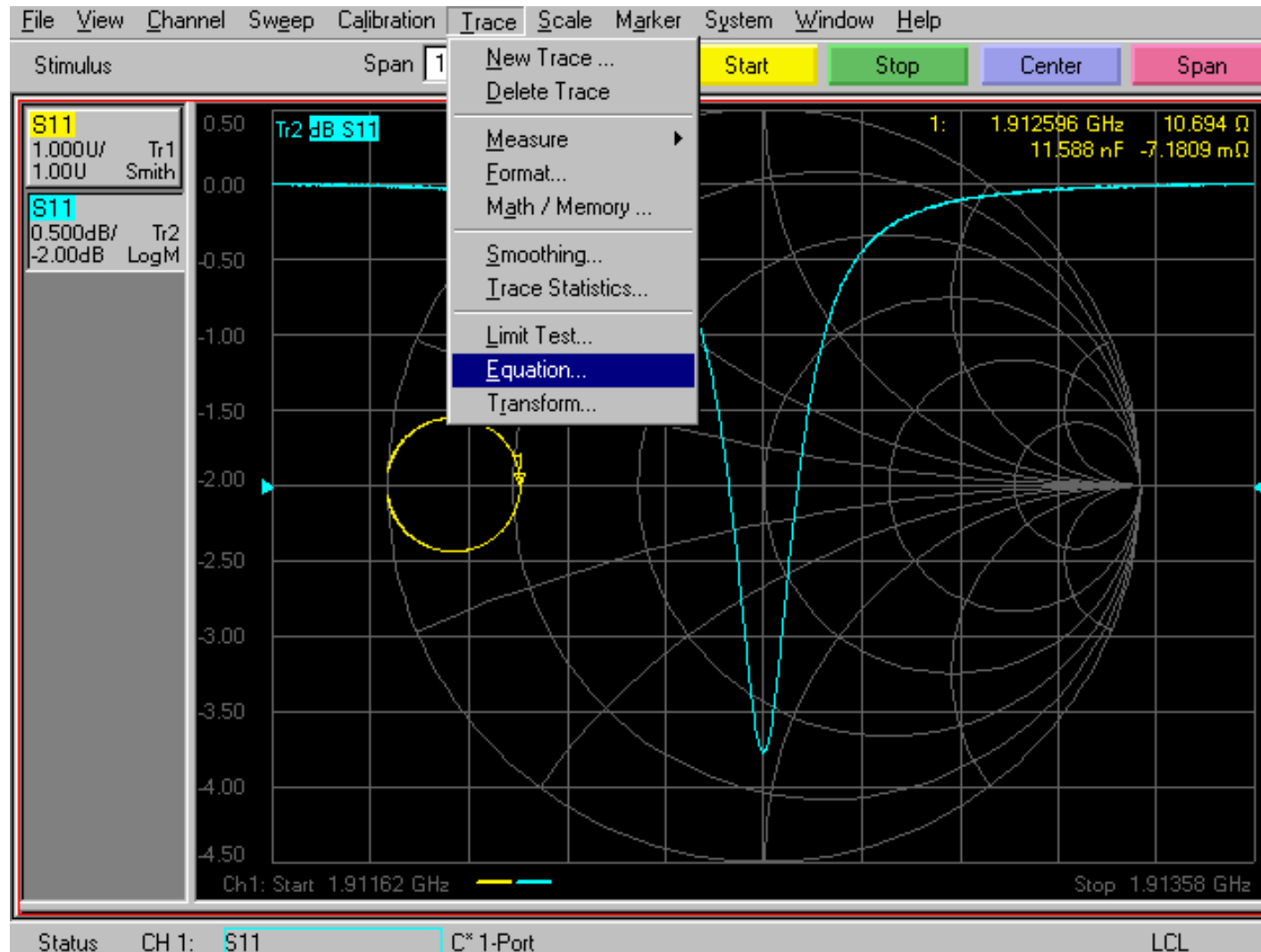
## Cavity impedance measurement with PNA



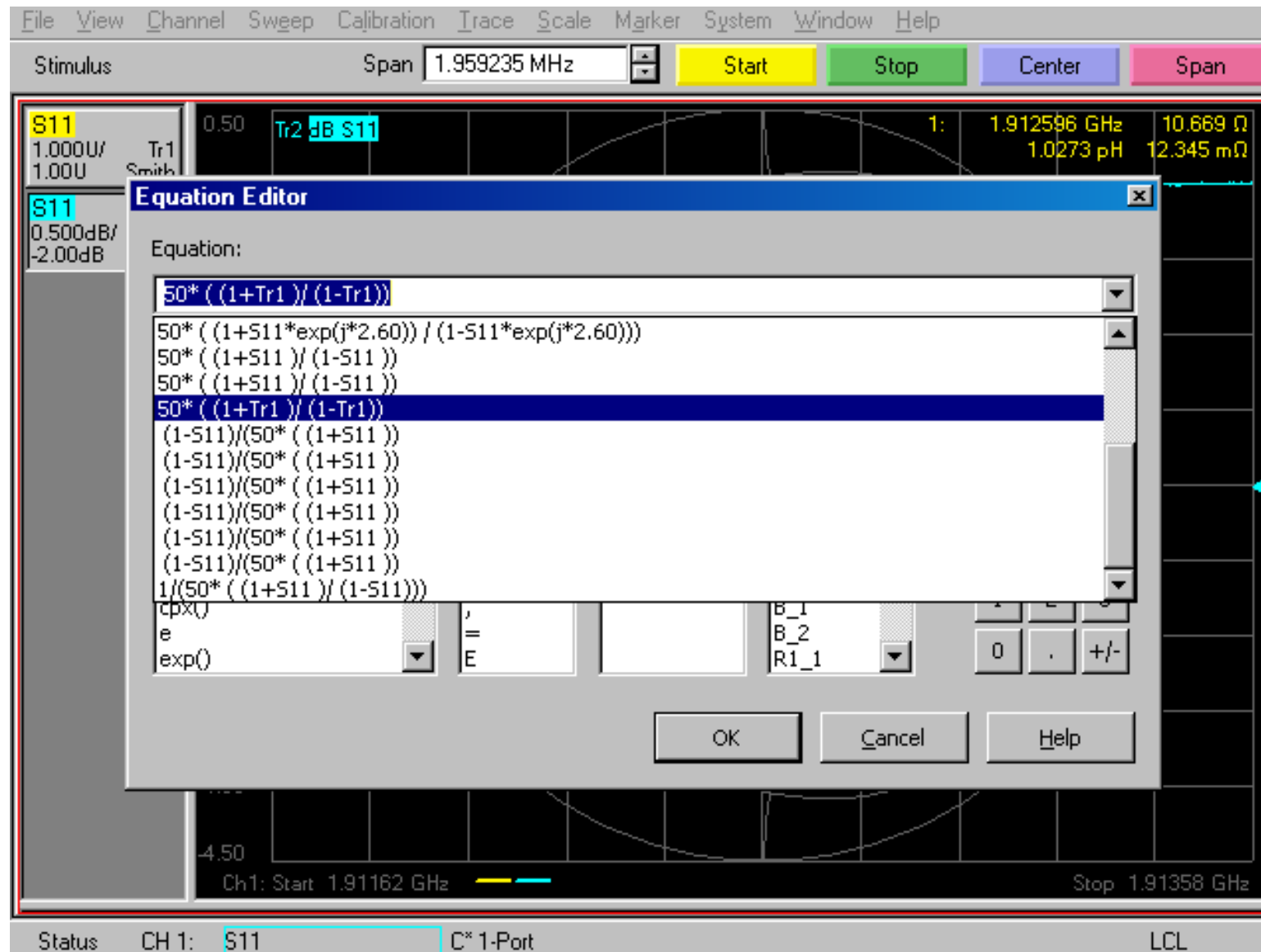
## Cavity impedance measurement with PNA



## Cavity impedance measurement with PNA

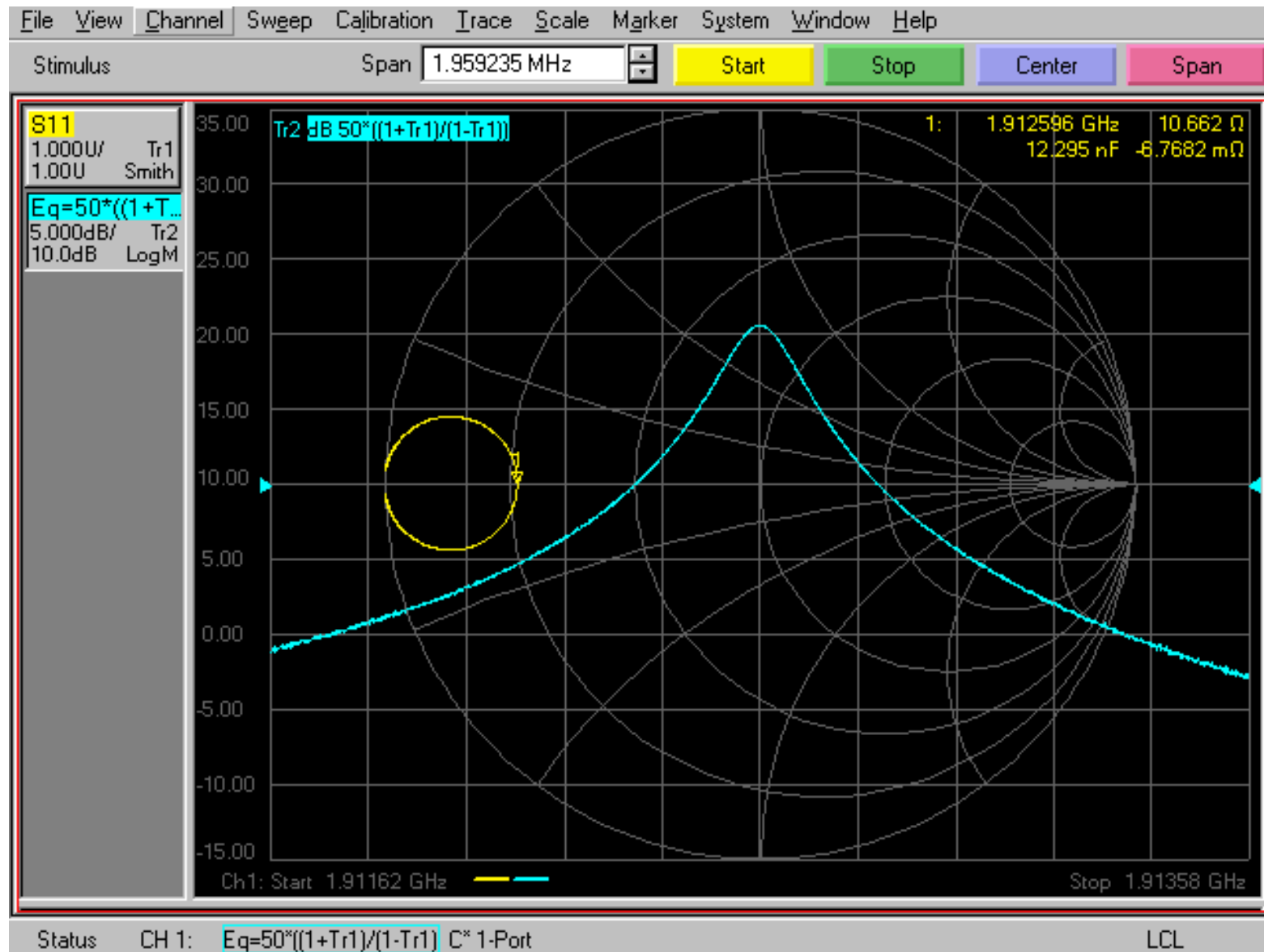


## Cavity impedance measurement with PNA

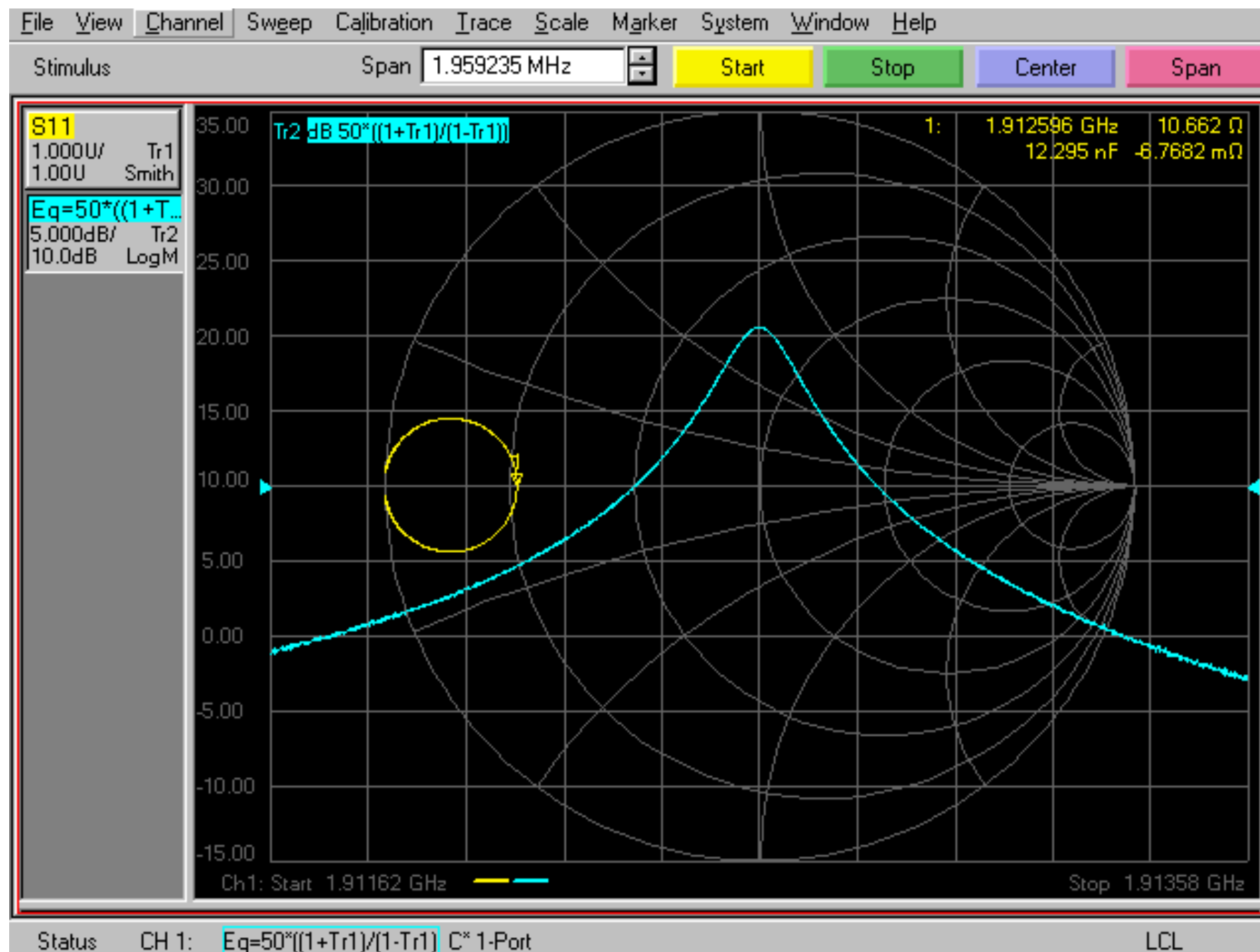




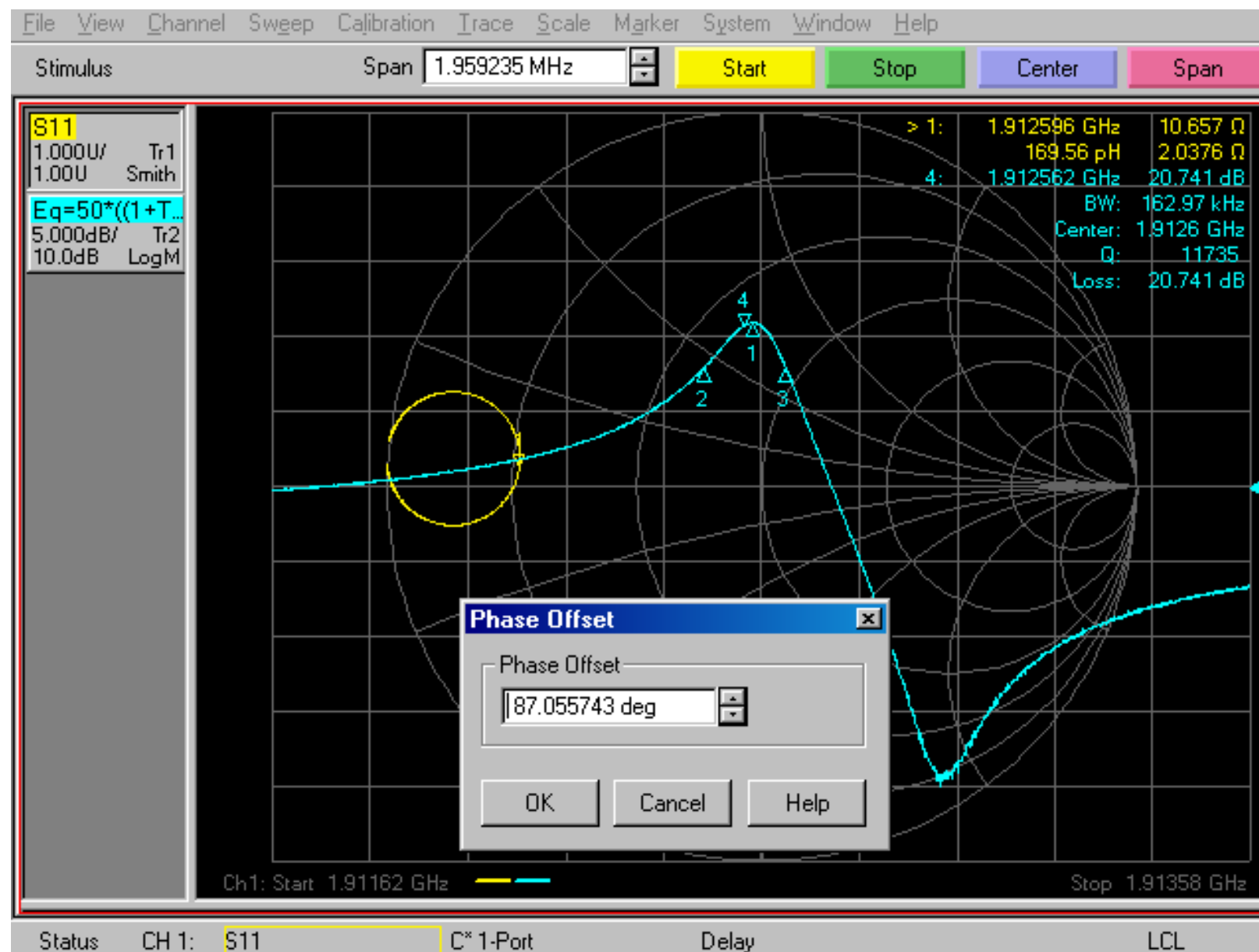
## Cavity impedance measurement with PNA



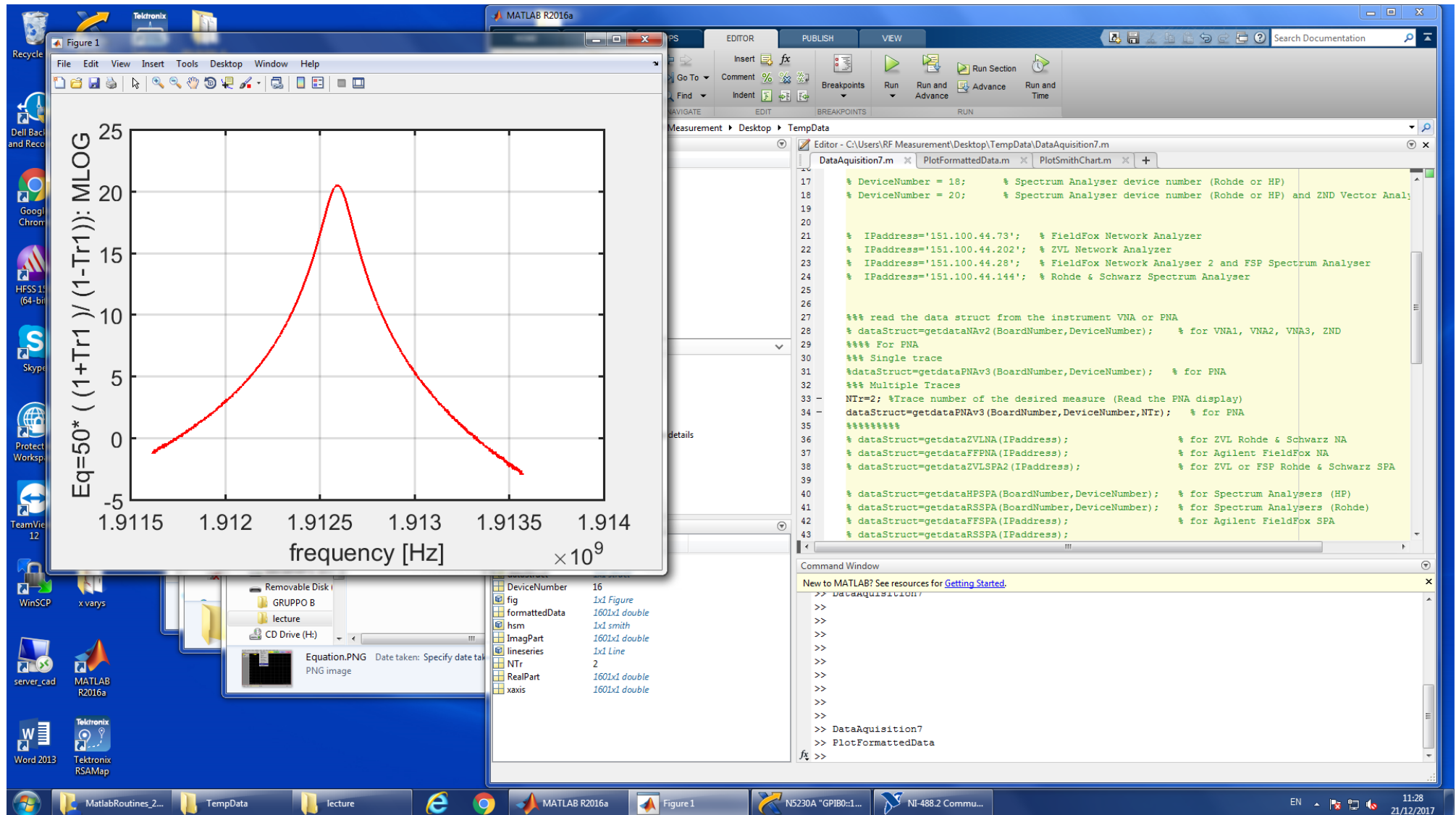
## Cavity impedance measurement with PNA



## Cavity impedance measurement with PNA



# Cavity impedance measurement with PNA: data acquisition



Breakpoints Advance Time

BREAKPOINTS RUN

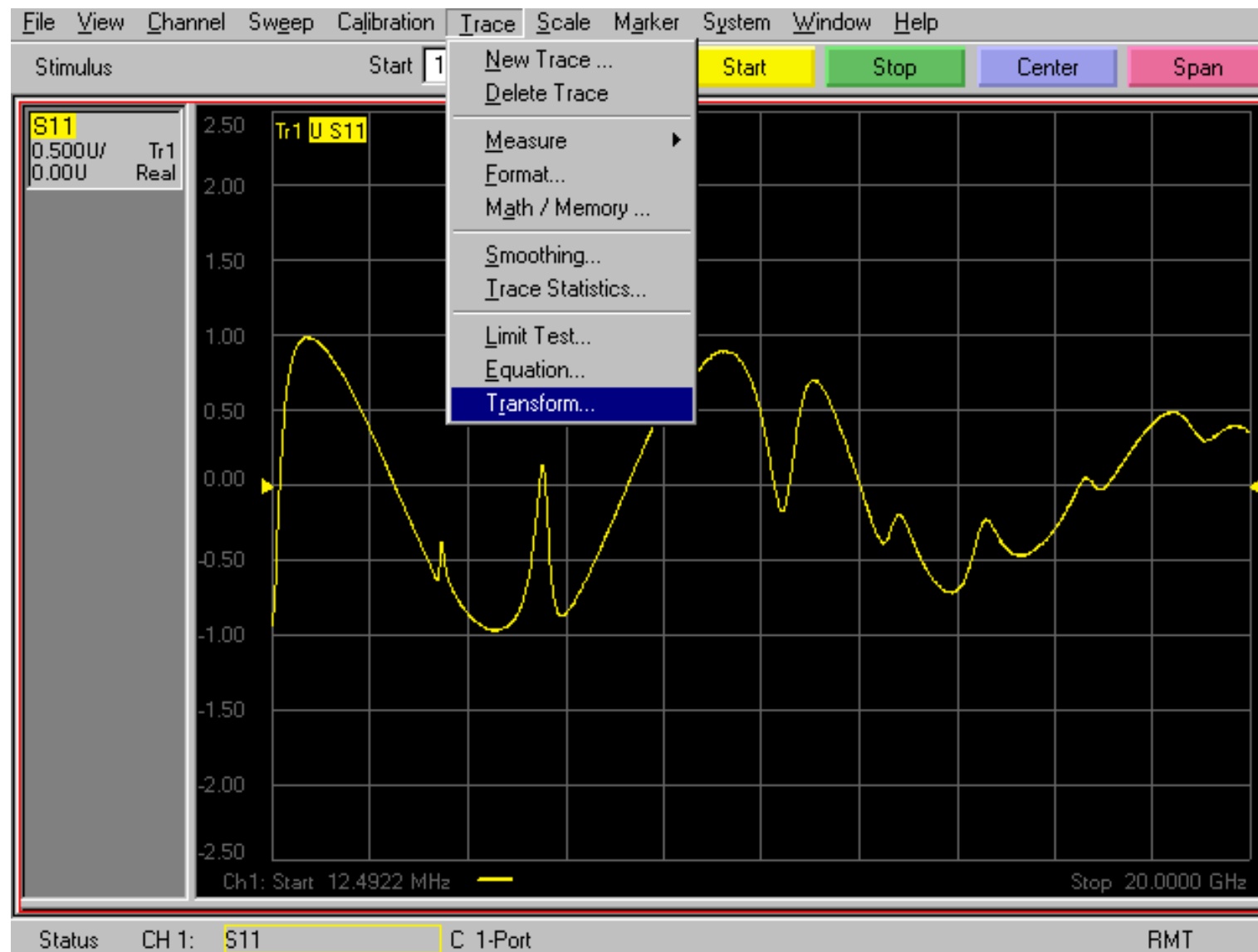
opData

Editor - C:\Users\RF Measurement\Desktop\TempData\DataAquisition7.m

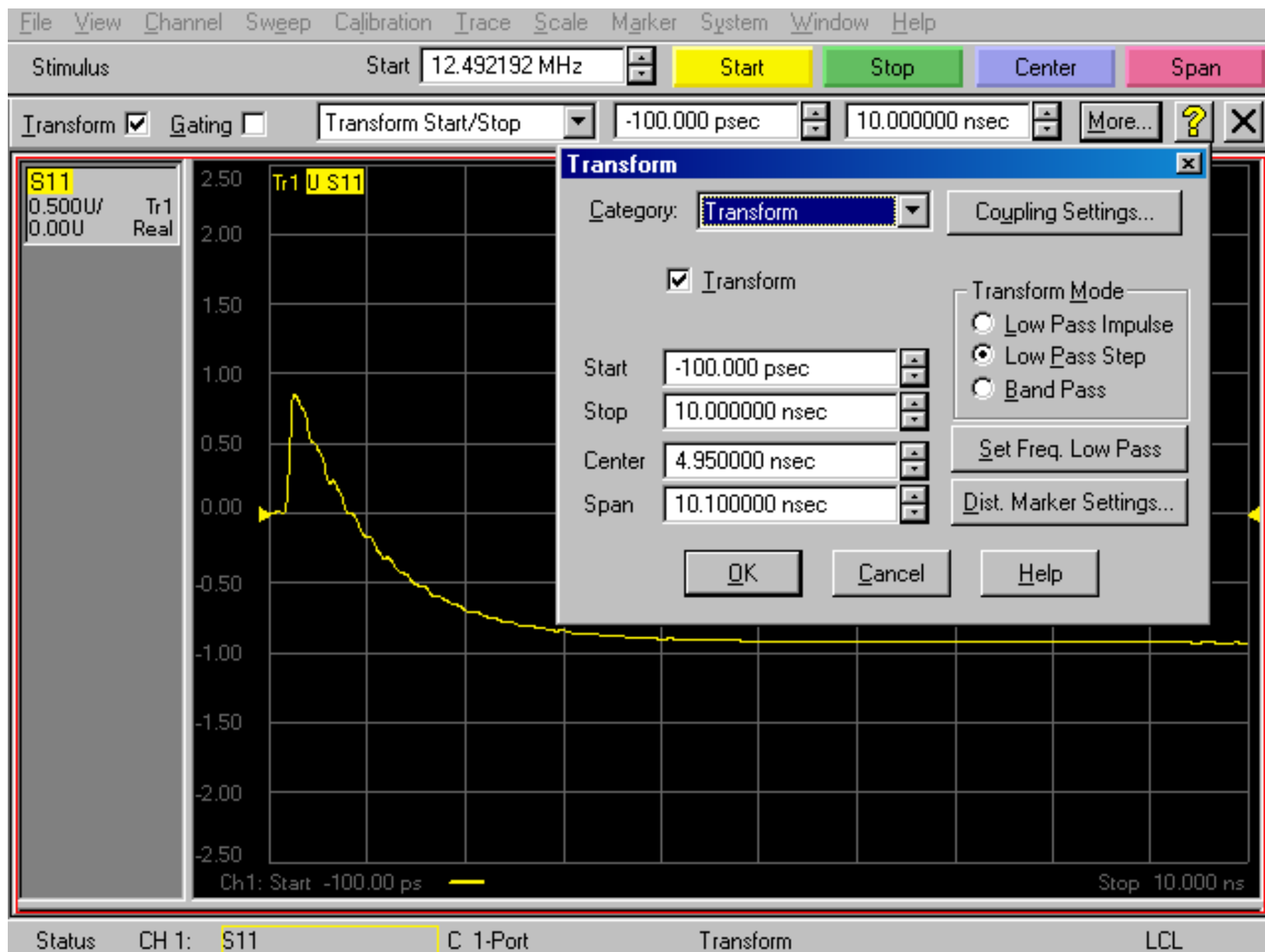
DataAquisition7.m x PlotFormattedData.m x PlotSmithChart.m x +

```
7 % DeviceNumber = 18; % Spectrum Analyser device number (Rohde or HP)
8 % DeviceNumber = 20; % Spectrum Analyser device number (Rohde or HP) and ZND Vector
9
10
11 % IPAddress='151.100.44.73'; % FieldFox Network Analyzer
12 % IPAddress='151.100.44.202'; % ZVL Network Analyzer
13 % IPAddress='151.100.44.28'; % FieldFox Network Analyser 2 and FSP Spectrum Analyser
14 % IPAddress='151.100.44.144'; % Rohde & Schwarz Spectrum Analyser
15
16
17 %%% read the data struct from the instrument VNA or PNA
18 % dataStruct=getdataNAv2(BoardNumber,DeviceNumber); % for VNA1, VNA2, VNA3, ZND
19 %%% For PNA
20 %%% Single trace
21 %dataStruct=getdataPNAv3(BoardNumber,DeviceNumber); % for PNA
22 %%% Multiple Traces
23 - NTr=2; %Trace number of the desired measure (Read the PNA display)
24 - dataStruct=getdataPNAv3(BoardNumber,DeviceNumber,NTr); % for PNA
25 %%%
26 % dataStruct=getdataZVLNA(IPAddress); % for ZVL Rohde & Schwarz NA
27 % dataStruct=getdataFFPNA(IPAddress); % for Agilent FieldFox NA
28 % dataStruct=getdataZVLSPA2(IPAddress); % for ZVL or FSP Rohde & Schwarz
29
30 % dataStruct=getdataHPSPA(BoardNumber,DeviceNumber); % for Spectrum Analysers (HP)
31 % dataStruct=getdataRSSPA(BoardNumber,DeviceNumber); % for Spectrum Analysers (Rohde)
32 % dataStruct=getdataFFSPA(IPAddress); % for Agilent FieldFox SPA
```

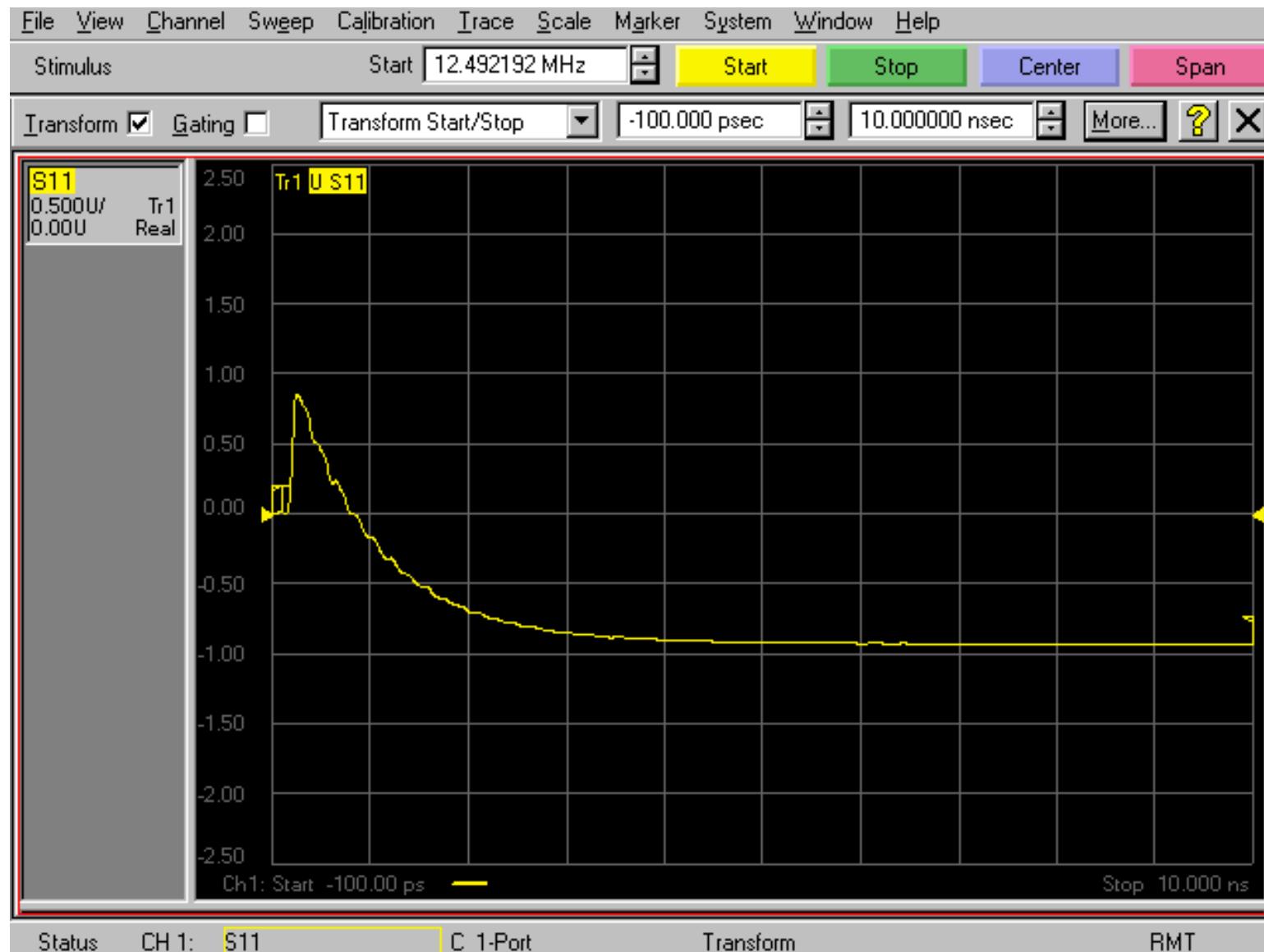
## TDR with PNA



## TDR with PNA

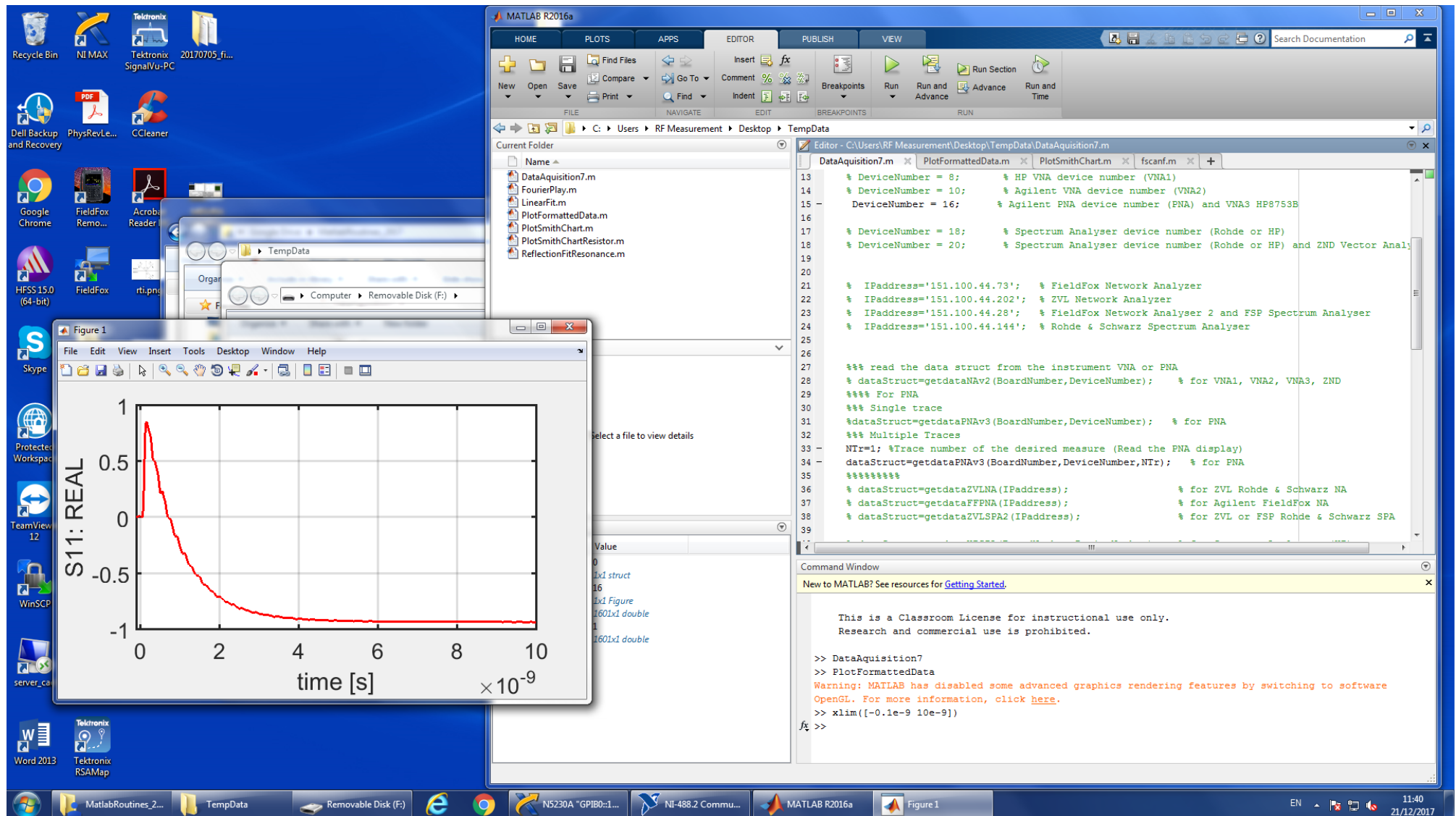


## TDR with PNA





## TDR with PNA: data acquisition



# TDR with Field Fox

